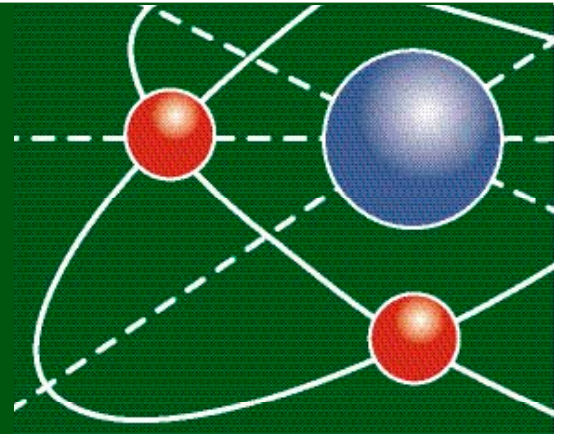


EESA [THE ELECTRIC ENERGY SOCIETY OF AUSTRALIA] NSW CHAPTER  
presents



# ENERGY NSW 2009

## Managing the winds of change



Gold Sponsors



Bronze Sponsor



28-30 October 2009 The Powerhouse Museum, Sydney



# An invitation from the NSW Chapter Chairman



It will be a great pleasure to welcome you and your partner at this year's Annual Conference of the NSW Chapter of the Electric Energy Society of Australia (EESA).

EESA has conducted a number of educational seminars during the year, but the annual conference provides a really significant opportunity for ongoing professional development. The industry has very large capital programmes, and technology continues to develop at breakneck speed. This opportunity, therefore for a detailed interchange between people in the utility industry and those in design and development is one that must not be missed.

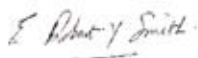
Last year the conference was moved from Brighton to the Powerhouse Museum at Darling Harbour, a location which proved to be very popular and convenient to the city. As a result, this year the conference will again be held at the Museum and the Entertainment Centre parking station is very convenient, with just a short covered walk to the Museum. The welcome reception on Wednesday evening will again provide an opportunity to inspect some of the museum's unusual exhibits.

The theme for this year's conference "Managing the Winds of Change" indicates the range of topics to be addressed. A number of eminent speakers have been engaged, and the effect that changes will have on everyone's work environment will be examined. Intelligent grids are becoming a reality and it is important to lead rather than be forced to follow. The conference provides the opportunity to prepare for such leadership and, at a very modest cost, to update and discuss relevant issues with experts from Australia and other countries. In addition to the formal presentations we will be able to discuss with manufacturers and suppliers the latest technology and developments around the world. We welcome our exhibitors and look forward to many fruitful discussions.

We are very pleased to welcome our many sponsors, in particular our Gold sponsors, Country Energy, EnergyAustralia, Integral Energy and TransGrid, as well as our bronze sponsor ActewAGL. All of these organisations are corporate members of the society and support the society in holding seminars throughout the year.

Partners are always welcome and this year there will be a guided aboriginal heritage tour of the Botanical Gardens, followed by an enjoyable lunch in the upper room at the Botanic Gardens Restaurant. The conference dinner will again be an ideal opportunity to refresh past acquaintances and to enjoy the company of like minded people.

I look forward to welcoming you to what I am sure will be another valuable and enjoyable conference.



Yours sincerely  
Bob Smith, EESA NSW Chapter Chairman

Wednesday 28 October  
18:30–20:00 Opening of trade exhibition and welcome reception  
The Powerhouse Museum

# Thursday 29 October

09:00 Welcome and Official Opening

Dr Robert Barr  
National President, EESA

## Keynote address

09:10 Developments in the Electricity Supply Industry - Nuclear Energy's emerging role

Tony Irwin, Reactor Manager, ANSTO

9.50 Morning tea

## Keynote address

MANAGING THE WINDS OF CHANGE IN ENERGY NETWORKS

10:15 Dr Ralph Craven, Chairman, Ergon Energy

10:35 George Maltabarow, Managing Director, EnergyAustralia

10:55 Kevin Murray, Managing Director, TransGrid

11:15 Matt Zema, CEO, AEMO

11:35 Rod Howard, Group GM Network, Integral Energy

11:55 Col Ussher, Executive GM Infrastructure Strategy, Country Energy

12.15 Bob Simpson, EENZ President, Chief Engineer, Transpower

12:40 Lunch

## CONCURRENT SESSIONS

### POWER QUALITY ISSUES AND THE NEED TO SATISFY CUSTOMER'S EXPECTATIONS

13:30 Mate - what have you done with my lights?

Sean Elphick, Prof Vic Gosbell, Vic Smith and Neil Browne  
Integral Energy Power Quality and Reliability Centre,  
University of Wollongong

14:00 A simplified approach to the management of harmonics in distribution networks

Dr Robert Barr, Electric Power Consulting Pty Ltd

14:30 Improving the harmonic management of distribution networks

Prof Vic Gosbell, University of Wollongong

### IMPLEMENTING EMBEDDED GENERATION INTO THE DISTRIBUTION NETWORKS

13:30 Embedded generation and the Active Distribution network - 2009 CIGRE Perspective

Alex Baitch, BES (Australia) Pty Ltd

14:00 Independent suppliers – the future grid. What is happening with Grid X?

Colin Chambers, Gridxpower

14:30 Mini-Grids and Mini-Grid planning tools

David Cornforth, CSIRO Energy Transformed Flagship.

15:00 Afternoon tea

### LARGE AMBITIOUS PROJECTS

15:30 Tallawarra Power Station reborn

John McIntyre, TRU Energy

16:00 Large renewable energy projects in the New South Wales energy system

Martin Poole, Epuron P/L

16:30 Planning for the Parramatta CBD Upgrade

Ty Christopher, Integral Energy

### BACK TO THE FUTURE - SMART NETWORKS PROGRESS TO DATE

15:30 The hidden reality of what IEC61850 and related standards means to power systems engineering

Rob Corke, EnergyAustralia

16:00 What role will transmission play in a "Smart Grid"

IEC61850 and its application to transmission networks

Ian Carpenter, TransGrid and Marco Janssen, UTInnovation

16:30 The move to IEC61850 - what and when will it be delivered?

Matthew Oong and Robert O'Reilly, Cooper Industries

17:00 Close of day one

18:30 Gala Dinner

Star Room, IMAX Theatre, Darling Harbour

Proudly sponsored by



# Friday 30 October

07:30 NSW AGM and Breakfast (for EESA members only)

## CONCURRENT SESSIONS

### CLIMATE CHANGE AND ITS IMPACTS ON NETWORKS

- 09:00 The impact of climate change on future infrastructure - lessons learnt and progress made  
Donna Lorenz, AECOM
- 09:30 The easiest, biggest green initiative - Power Factor Correction  
Leith Elder, Country Energy and Chris Halliday, Electrical Consulting and Training
- 10:00 Climate variation and the prospective challenge to energy networks  
Prof Murry Salby, Macquarie University

### SMART ENERGY METERS - A LINK TO INTELLIGENT NETWORKS?

- 09:00 Smart metering enabling Intelligent Networks  
Michael Lysaght, Country Energy
- 09:30 Integral Energy's experience with smart metering and ToU pricing  
Stephen Lette, Integral Energy
- 10:00 EnergyAustralia's operating experiences with new metering technologies  
Paul Topfer, EnergyAustralia

## 10:30 Morning tea

### ASSET MANAGEMENT / SWITCHGEAR AND TRANSFORMERS

- 11:00 Transformer repair and replacement strategies in Country Energy  
Lindsay McPherson, Country Energy
- 11:30 Earth fault monitoring - one utility's approach  
Bill Carman, EnergyAustralia
- 12:00 New developments in diagnosing flaws in HV equipment - a 2009 CIGRE view  
Barry Finlay, Aurecon

### SAFETY AND COMMUNICATIONS - NEW CHALLENGES AND SOLUTIONS

- 11:00 Understanding EWP insulation and testing in accordance with AS1418.10  
Graham Burgess, Integral Energy
- 11:30 Safety, electricity and communications - new challenges and new solutions from Standards Australia  
Colin Blair, Standards Australia
- 12:00 Arc hazards and standards - a timely update  
Dr David Sweeting, Sweeting Consulting Pty Ltd

## 12:30 Lunch

## PLENARY SESSION

### RECOVERY FROM LARGE SCALE DISASTERS - WHAT HAVE WE LEARNT?

- 13:35 An international round up - A CIGRE view  
Lionel Smyth, GM/Network, TransGrid
- 14:20 The Victorian bushfires - a distributor's experience  
David Gardner, Consultant, Power Poles & Crossarms Forum, ENA
- 14:50 Coping with the NSW floods and weather extremes  
Steve Wilson and Neville Cooper, Country Energy
- 15:15 Questions and discussion
- 15:30 Conference closing address





# Conference

## CONFERENCE VENUE

### The Powerhouse Museum

500 Harris Street  
Ultimo, Sydney  
Tel 02 9217 0111  
Fax 02 9217 0333

## ACCOMMODATION

### Citigate Central Hotel

4 Star rating  
169-179 Thomas Street, Sydney  
Tel 02 9281 6888  
Fax 02 9281 4237  
www.mirvachotels.com  
Executive King Room: \$190 (room only)  
(10 minutes walk to the Powerhouse Museum)

### Aspire Hotel

3 Star rating (no restaurant/bar facility)  
383-389 Bulwara Road, Sydney  
Tel 02 9211 1499  
Fax 02 9281 3764  
www.aspirehotel.com  
Standard Room \$140 (room only)  
\$158 (room with breakfast)  
\$176 (room with breakfast for two)  
(2 minute walk to the Powerhouse Museum)



Photos courtesy of The Powerhouse Museum, Citigate Central Hotel, Aspire Hotel and Star Room

## SOCIAL FUNCTIONS

### Wednesday 28 October

Opening of trade exhibition  
and welcome reception

Venue Powerhouse Museum  
500 Harris Street  
Ultimo, Sydney

Time 18:30 – 20:00

Cost Inclusive for delegates;  
Guests  
@ \$38.50 per person.

### Thursday 29 October

Gala Dinner

Venue Star Room  
Level 6, IMAX Theatre Complex  
31 Wheat Road  
Darling Harbour

Time 18:30 – 23:00

Cost Inclusive for delegates;  
Guests and exhibitors  
@ \$77.00 per person.

Proudly sponsored by



## PARTNERS PROGRAM

### Thursday 29 October

Explore the tranquility &  
heritage of The Royal Botanic  
Gardens!

Uncover the Royal Botanic Gardens rich  
Aboriginal Heritage with a tour lead by  
an aboriginal education officer. Learn the  
diverse history and culture of Aboriginal  
people of the Sydney region and in particular,  
of their reliance on plants.

The tour will conclude with lunch at The  
Botanic Gardens Restaurant set within  
tropical rainforest, overlooking Sydney  
Harbour.

Cost: \$33.00

(includes transport, guided tour and lunch.)

# General Information

## Location

The Powerhouse Museum is located within walking distance of the Sydney CBD. It is adjacent to Darling Harbour.

Parking is available at the Entertainment Centre Car Park for \$11.50 when tickets are validated at the Museum. The car park is connected to the Museum by a walkway and is approximately 3 minutes walk. The nearest Monorail and Light Rail stop is Paddy's Markets.

## CPD points

Attendance may be credited towards Engineers Australia Continuing Professional Development (CPD) requirements. Engineers Australia members are required to undertake a minimum of 150 hours of CPD every 3 years.

## Program changes

The program of papers and speakers may be subject to change. Please refer to the EESA website for program updates at [www.eesa.asn.au](http://www.eesa.asn.au)

## Fees & charges

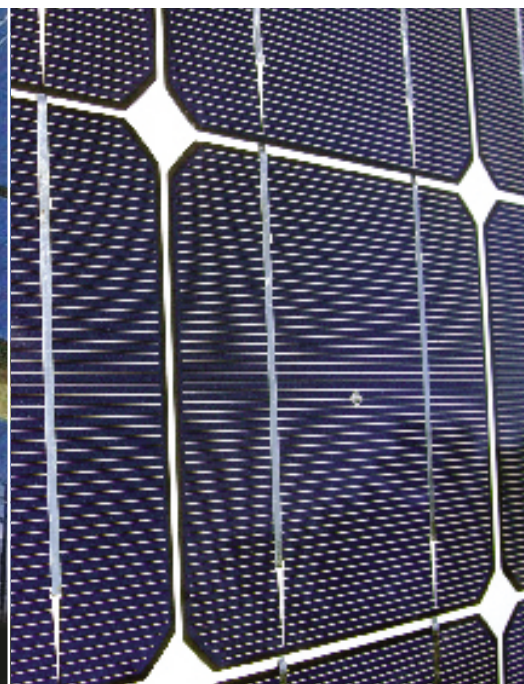
All fees and charges include GST.

## Registration

To register for the conference, social functions, partner program and/or as an exhibitor, please use the forms included in this booklet.

Registration forms can be either faxed or mailed to The Meetings Manager or you can register on line at [www.tmm.com.au](http://www.tmm.com.au).

The Meetings Manager Pty Ltd  
145/2-18 Buchanan Street, Balmain NSW 2041  
Tel: 02 9810 7322 Fax: 02 9810 7320



## Conditions and Cancellations

**Conference:** If you are unable to attend the conference, a substitute delegate is welcome at no extra charge. Where no substitute is available, a fee of \$110.00 (incl GST) will be deducted from your registration fee for cancellations received by The Meetings Manager in writing at least 14 days prior to the event.

A 50% refund, plus conference documentation, will be given if cancellations are received in writing between 14 and 7 days prior to the event. Thereafter no refunds will be made, but conference documentation will be sent by mail following the event.

**Exhibition:** In the event of cancellation, exhibitors are requested to inform The Meetings Manager Pty Ltd in writing. Unless the space can be resold, the organisers reserve the right to retain any monies paid.

Exhibits should meet the aesthetic and professional standards of the conference. Promotional activity should not impinge on or directly interfere with any other exhibitor.

Exhibitors are liable for any damage they cause to the venue and the exhibition booths. It is the responsibility of the exhibitor to arrange insurance for items within their exhibition.

**Hotel cancellation:** Cancellations made within 14 days are subject to the hotel's cancellation policy and may be charged for one night's accommodation. On the day of arrival "no shows" and cancellations will be fully charged.

## Our privacy policy

By registering for this conference, relevant details will be held on a database by The Meetings Manager and EESA. A delegate list will be provided to all conference participants (name, position and organisation only).

Information may also be made available to parties directly related to the conference including sponsors and/or exhibitors. If you do not wish your information to be used in this manner, please advise The Meetings Manager by email to [eesa@tmm.com.au](mailto:eesa@tmm.com.au) or by fax to 02 9810 7320.

# Exhibitor registration form

To book your exhibition space please complete this form and forward to The Meetings Manager, fax 02 9810 7320 or mail to 145/2-18 Buchanan Street, Balmain NSW 2041

Name \_\_\_\_\_

Position \_\_\_\_\_ Organisation \_\_\_\_\_

Address \_\_\_\_\_ Postcode \_\_\_\_\_

Telephone \_\_\_\_\_ Fax \_\_\_\_\_ Email \_\_\_\_\_

## Exhibitor registration fees (incl GST)

\$2200 per booth

## Exhibition package

- one exhibition shell scheme measuring 1.5 x 2 x 2.4
- 1 corflute sign with company name
- 1 x 150-watt spotlight
- 1 x 4amp power point
- 1 trestle table and 2 chairs

## Benefits include

- a 5 minute presentation to the conference on your product or service
- acknowledgement in the conference booklet
- attendance at conference session for one representative
- lunch, morning and afternoon teas for two representatives

## Registration

One registration to the welcome reception and the conference sessions is included in the exhibitor package. Tickets to the dinner can be purchased separately.

## Location preference

Booth number/s:

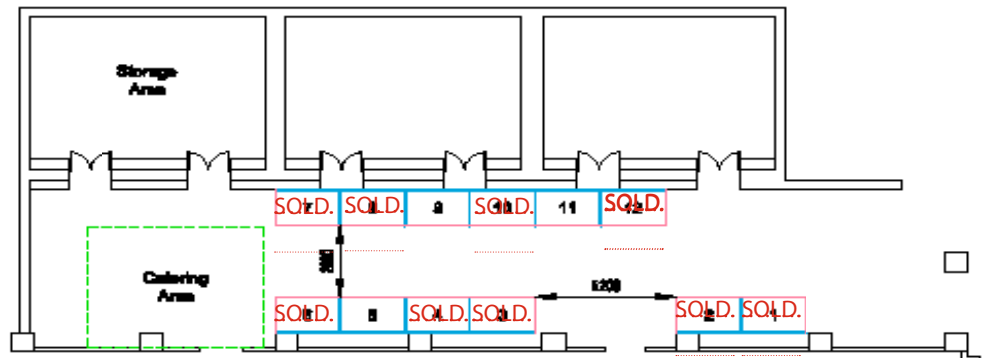
1st preference [       ]

2nd preference [       ]

3rd preference [       ]

(Please indicate your location preferences as per the floor plan.

Booths will be allocated on 'first come, first served' basis, and on receipt of payment.)



## Payment details

A cheque payable to The Meetings Manager Pty Ltd is enclosed

Please charge the following credit card:    Mastercard     Visa     Amex

Card number              Expiry date \_\_\_\_ / \_\_\_\_    CCV \_\_\_\_\_

Signature \_\_\_\_\_    Cardholder name \_\_\_\_\_

(credit card payment not valid without signature)

